

WMI Provider GUI

Panasonic (PSSNA)

Version: 1.00 L31

Update Notes

- Added CF33 Skylake Main tabs (missing some BIOS options).
- Added support for FZ-Q1, FZ-Q2MK1, FZ-XZ6 (EU), CF-33 and CF20MK2
- Added support for “Secure Boot Control” Setting (Models supported – CF-20MK1+, CF-54MK1+, and FZ-M1MK2)

System Requirements

- Windows XP, Windows Vista, Windows 7, Windows 8, or Windows 10.
- .NET Framework 3.5
- Panasonic Misc Driver
- Panasonic WMI Provider 3.13 (included in installation)

Supported Models

CF-W8 mk1
CF-T8 mk1, mk3, mk4
CF-F8 mk1, mk3
CF-C1 mk1, mk2
CF-C2 mk1, mk2
FZ-M1 mk1, mk2
FZ-M1V mk1, mk2
FZ-G1 mk1, mk2, mk3, mk4
FZ-Q1 mk1
FZ-Q2 mk1
CF-AX2 mk1, mk2
CF-AX3 mk1, mk2, mk3
CF-LX3 mk2, mk3
CF-D1 mk1, mk2, mk3
CF-54 mk1, mk2
UT-MA6 mk1
UT-MB5 mk1
FZ-Y1 mk2
CF-74 mk4
CF-52 mk2, mk3, mk4, mk5
CF-53 mk1, mk2, mk3, mk4
CF-19 mk3, mk4, mk5, mk6, mk7. mk8
CF-30 mk3
CF-31 mk1, mk2, mk3, mk4, mk5
CF-33Mk1
CF-20 mk1
CF-U1 mk1, mk2

CF-H1 mk1, mk2

CF-H2 mk1, mk2, mk3

***Special note for some settings in the WMI Tool:**

- **“Secure Boot Control” Setting** – Is read-only, cannot be changed for security reasons
- **“UEFI Boot” Setting** – Cannot be enabled through WMI, for security reasons
- **“Set CSM Support” Setting** – Changing setting will fail when “Secure Boot” Setting is enabled

WMI - BIOS configuration Tool

Usage

Double click "WMI Provider GUI" shortcut to start the utility. WMI Provider GUI is a Windows based utility that can be used to modify BIOS settings on Panasonic Toughbooks. The modifications can be applied on the same unit on which the utility is running, or remotely by exporting a VBS script which is then executed on a remote unit.

Operation: Login Screen

The utility can run in two modes which are selectable at start up.

The "Connect to local PC" mode can be used to export BIOS settings on the currently running machine. The "Config only mode" can be used to generate .INI config files which can then be opened later, or it can be used to export VBS scripts.

If "Connect to local PC" is selected, the utility will attempt to establish a connection with the BIOS, if the BIOS is protected by a supervisor password, you will be asked to enter it now. The supervisor password is required to make modifications to the BIOS, in the local connection and in the VBS script.

Operation: Main Window in local connection mode

Once in the main window, you can change any BIOS settings that are available on the model to which you are connected to. The current values of the settings will be displayed in the window, select the categories under "BIOS" on the left to display the appropriate settings on the right side.

The "Apply to BIOS" option must be clicked to apply the BIOS settings to the local machine. Once complete, the message "BIOS settings successfully applied" will be displayed, if any error occurred while applying the settings, a log file is available, called "toughbookwmi.txt" which will contain a detailed description of the error. Please send this file, including a screenshot of the error, to the person from whom you received this utility.

Operation: Main Window in config only mode

Since in "Config only mode" the model is unknown, it should be selected in the "Filter by model/mark" options at the top of the window. The exported VBS script will remember this model number and will verify it before applying them.

Operation: VBS script

A VBS script can be exported from both config and local connection mode. When executed, this script will apply the settings on the machine on which it is executed on. Administrators can generate specific settings to apply on their units, then export the VBS script, deploy this script along with the installation of WMI Provider, and then execute the script remotely to apply the settings. If a supervisor password is set up on the machine, it must be passed to the script as a command line argument, e.g. "myBiosScript.vbs secret". It is recommended to use the command line utility "cscript" included with Windows to execute the scripts, this will display all output from the script on the console including any errors. The output can also be exported to log a file.

Example:

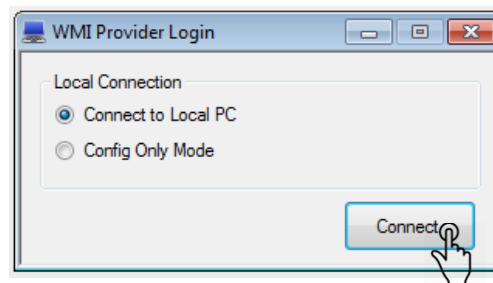
```
cscript myBiosScript.vbs secret > logfile.txt
```

This command will execute "myBiosScript.vbs" with the supervisor password "secret" and write the results to the file "logfile.txt".

WMI - BIOS configuration Walkthrough

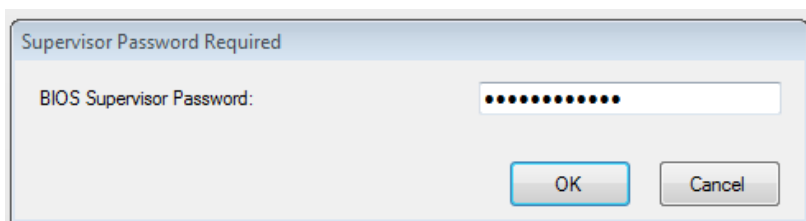
1. WMI Tool consists of two parts: WMI GUI and WMI provider library, first the WMI provider must be installed, then we will be able to run "ToughBook WMI GUI.exe". (WMI Tool can be used to modify BIOS settings on Panasonic Toughbook devices: The desired modifications can be applied to a local unit or remote units by exporting VBS script files executed on remote unit.)
2. After running the "ToughBook WMI GUI.exe", you will be prompted to select one of two modes, which are explained below.

i. Connect to Local PC Mode



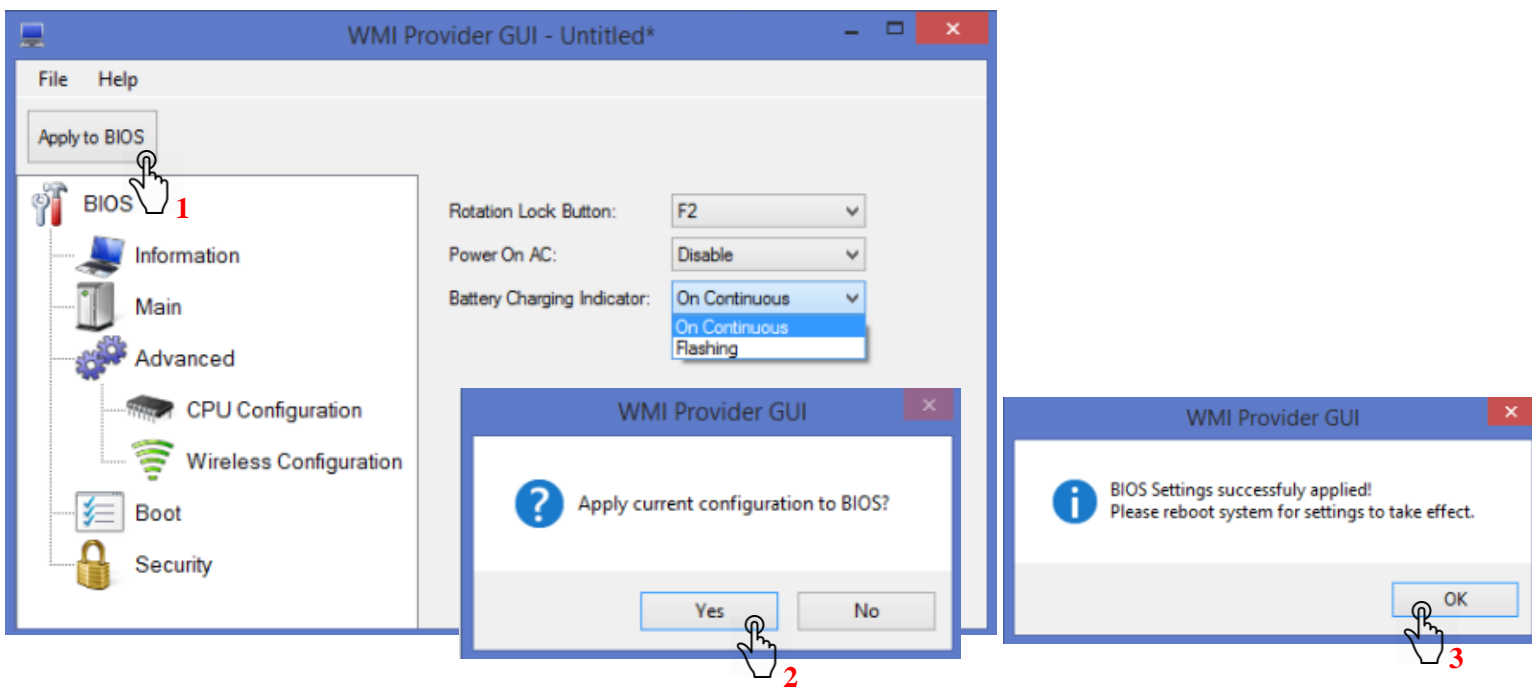
Connect to local PC Guide:

- a. Establishes connection with BIOS (this mode is used to modify BIOS on the current machine), if BIOS is protected with Supervisor password, user will be asked to enter Supervisor Password. If prompted to enter password: enter the appropriate Supervisor password assigned to your computer. (Supervisor password is required to make modification to BIOS in local connection mode and in the VBS scripts)





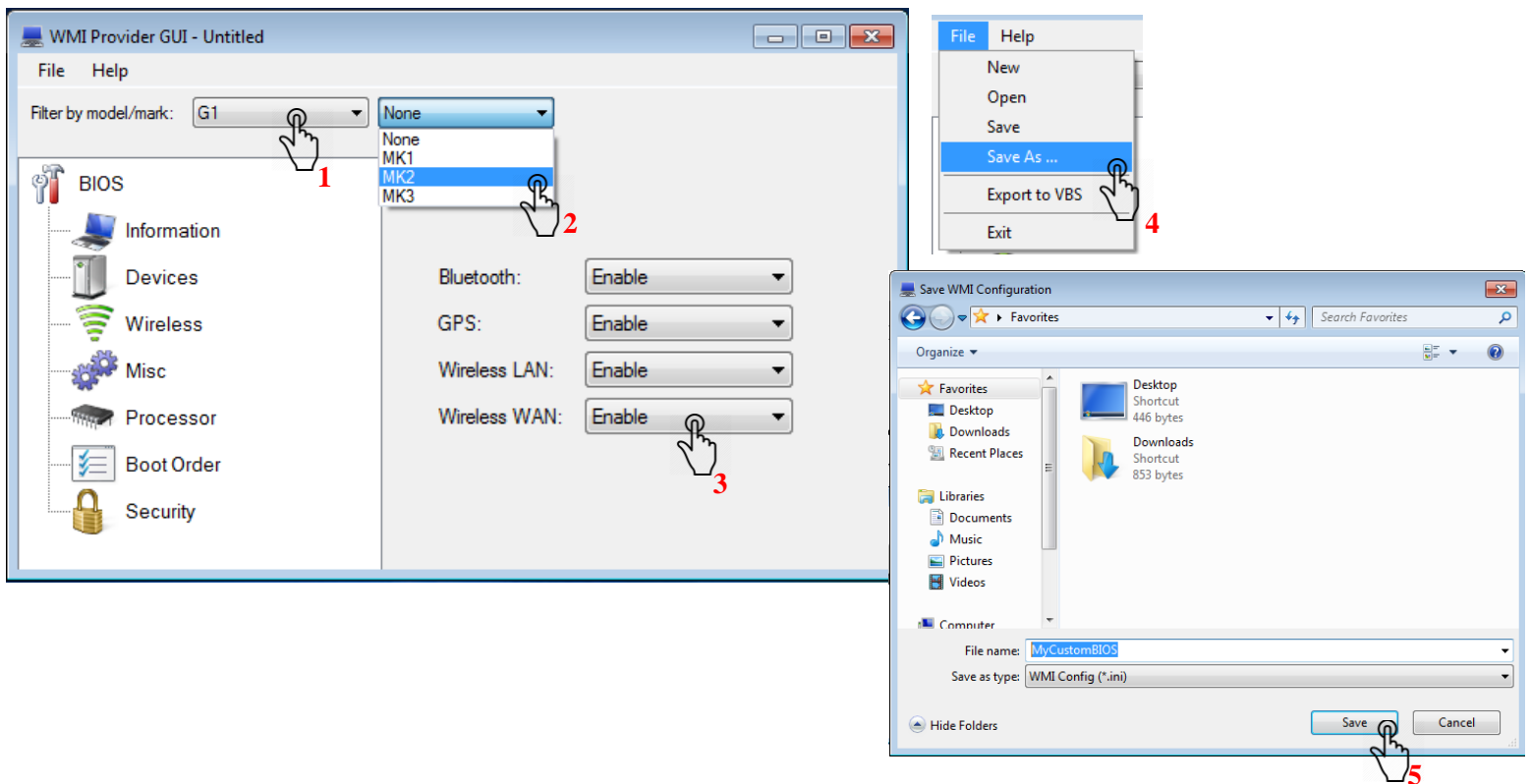
- b. After entering password, you are now able to change BIOS parameters by selecting the category on the left side, and changing the parameters using the dropdown menu. Once finished selecting the custom BIOS parameters, click on "apply to BIOS" to apply BIOS settings to local machine. Once this operation is completed, you will see "BIOS settings successfully applied", if any error occurs – a log file will be created showing the details of the occurred error.



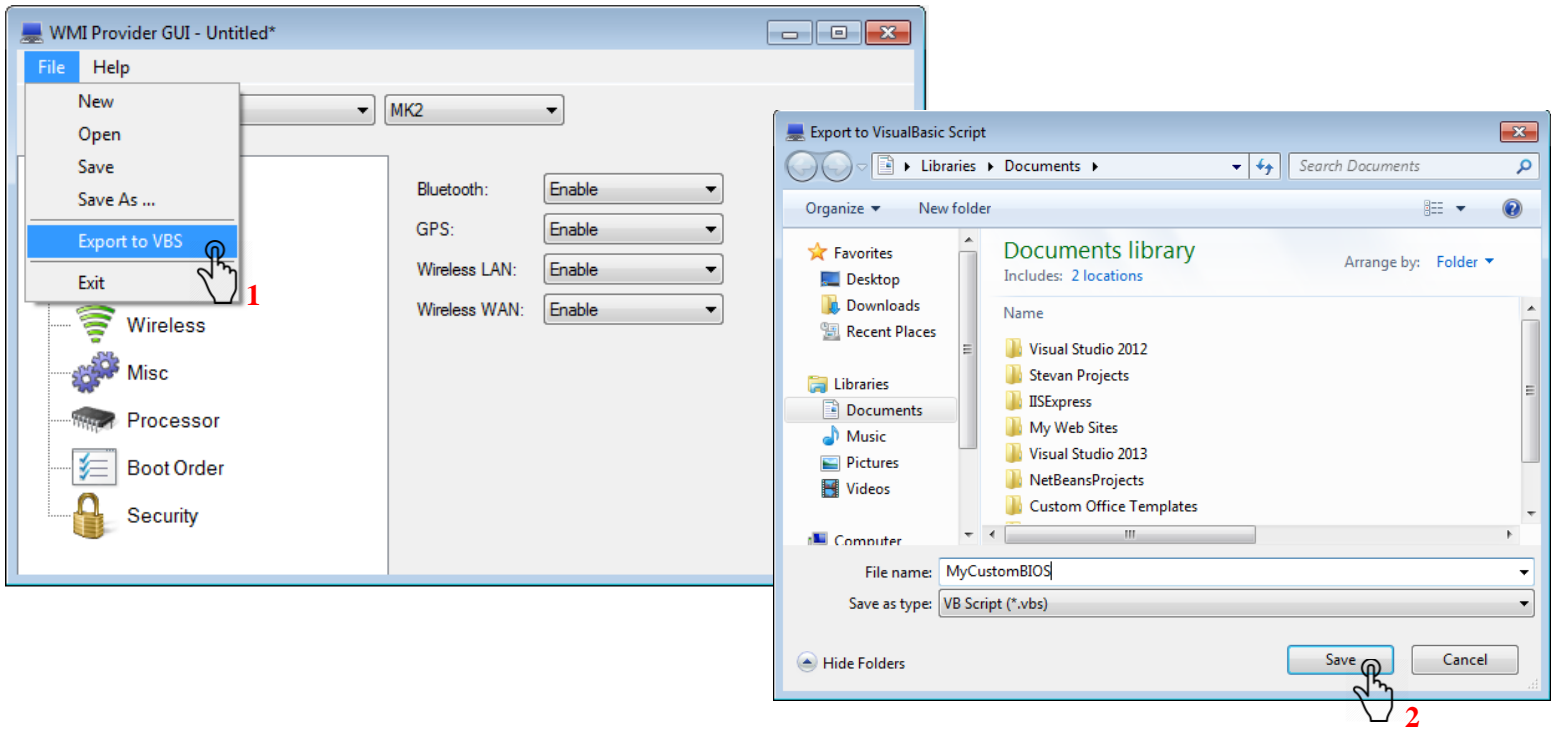
ii. Config Only Mode

Config Only Mode Guide:

- This mode can be used to generate .INI files or to export VB scripts (used to create a custom BIOS configuration which can be sent to other machines to apply the selected settings). Select the computer model by “Filter model/mark” menu at the top. (VB script will remember model number before apply those settings)
- After selecting the model and mark, select the settings you want to change using the categories on the left and using the dropdown menus.
- When finished selecting the desired settings, the custom configuration can be saved and applied later on a different machine the WMI tool by saving as an “.INI” file. To do so, press on “File”, then “Save as” and choose where you would like to save the file.



- d. It is also possible to save the configured WMI settings as a VB script (after you have selected the desired BIOS settings). To do so, press on “File”, then “Export to VBS” and choose where you would like to save the file.



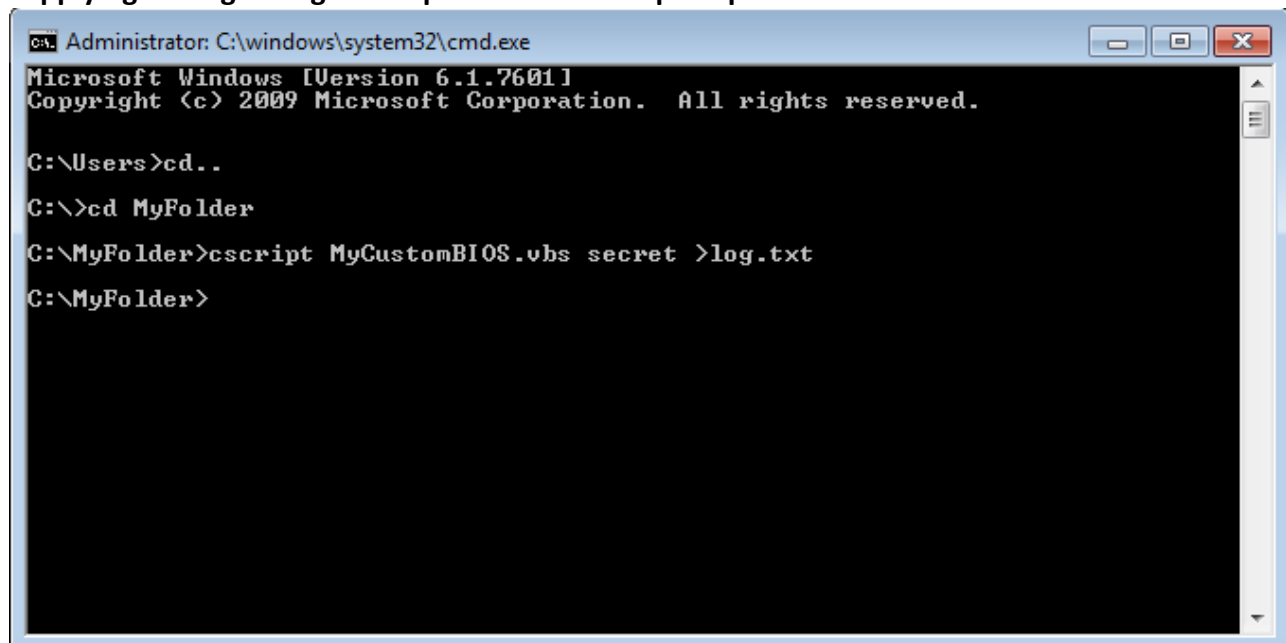
- e. The VB scripts created in the previous step can be applied to BIOS using cscript utility using syntax shown below, using the Windows command prompt. The command output will be logged into log.txt file and will be found at the specified file location.

EXAMPLE COMMAND:

(If your .vbs file (VB script) is named “MyCustomBIOS.vbs” and is located at file location “C:\MyFolder\” and your BIOS Supervisor password is “secret”. The command should as be as shown below.

C:\MyFolder>cscript MyCustomBIOS.vbs secret > log.txt

Applying settings using VB script and command prompt.



```
Administrator: C:\windows\system32\cmd.exe
Microsoft Windows [Version 6.1.7601]
Copyright (c) 2009 Microsoft Corporation. All rights reserved.

C:\Users>cd..
C:\>cd MyFolder
C:\MyFolder>cscript MyCustomBIOS.vbs secret >log.txt
C:\MyFolder>
```